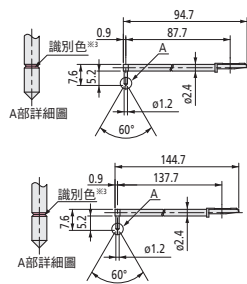


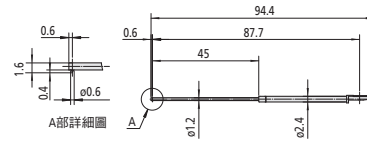
深孔用^{※2}



2倍
12AAC740 (2 μ m)
12AAB413 (5 μ m)^{※1}
12AAB425 (10 μ m)^{※1}
() : 前端半徑

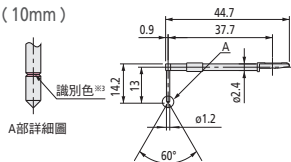
3倍
12AAC741 (2 μ m)
12AAB414 (5 μ m)^{※1}
12AAB426 (10 μ m)^{※1}
() : 前端半徑

細長孔用^{※2}



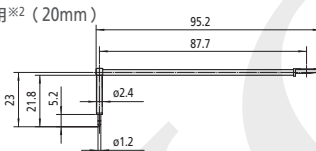
12AAE938 (2 μ m)
12AAE940 (5 μ m)^{※1}

深溝用 (10mm)



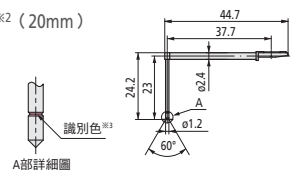
12AAC735 (2 μ m)
12AAB409 (5 μ m)^{※1}
12AAB421 (10 μ m)^{※1}
() : 前端半徑

深溝用^{※2} (20mm)



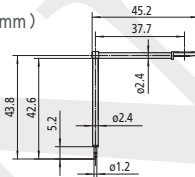
12AAE893 (2 μ m)
12AAE909 (5 μ m)^{※1}
() : 前端半徑

深溝用^{※2} (20mm)



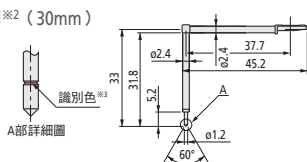
12AAC736 (2 μ m)
12AAB408 (5 μ m)^{※1}
12AAB420 (10 μ m)^{※1}
() : 前端半徑

深溝用^{※2} (40mm)



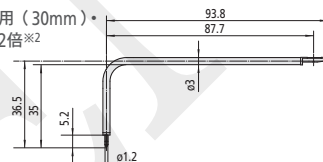
12AAE895 (2 μ m)
12AAE911 (5 μ m)^{※1}
() : 前端半徑

深溝用^{※2} (30mm)



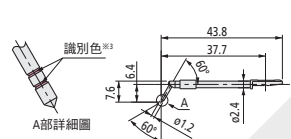
12AAC737 (2 μ m)
12AAB407 (5 μ m)^{※1}
12AAB419 (10 μ m)^{※1}
() : 前端半徑

深溝用 (30mm) · 深孔2倍^{※2}



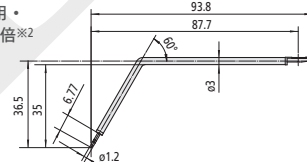
12AAE894 (2 μ m)
12AAE910 (5 μ m)^{※1}
() : 前端半徑

齒面用



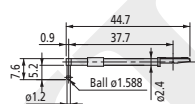
12AAB339 (2 μ m)
12AAB410 (5 μ m)
12AAB422 (10 μ m)
() : 前端半徑

齒面用 · 深孔2倍^{※2}



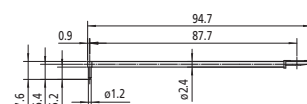
12AAE896 (2 μ m)
12AAE912 (5 μ m)
() : 前端半徑

滾圓波紋用^{※4}



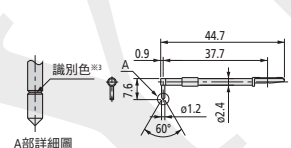
12AAB338 (ø1.588)

滾圓波紋、深孔2倍^{※2} ^{※4}



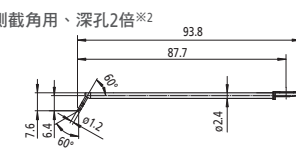
12AAE886 (250 μ m)

刀刃用



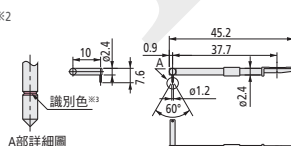
12AAC738 (2 μ m)
12AAB411 (5 μ m)^{※1}
12AAB423 (10 μ m)^{※1}
() : 前端半徑

孔量測截角用、深孔2倍^{※2}



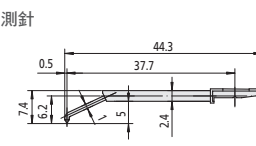
12AAM601 (2 μ m)
12AAM603 (5 μ m)
() : 前端半徑

偏心用^{※2}



12AAC739 (2 μ m)
12AAB412 (5 μ m)^{※1}
12AAB424 (10 μ m)^{※1}
() : 前端半徑

孔底圓錐測針



12AAE899 (2 μ m)
12AAE915 (5 μ m)^{※1}
() : 前端半徑

※1 : 前端角度90°

※2 : 僅限用於朝下量測

※3 :

前端半徑	1 μ m	2 μ m	5 μ m	10 μ m	250 μ m
識別色	白色	黑色	無顏色	黃色	缺口、顏色皆無

※4 : 用於校正時，另外需要段差標準片 (No.178-611、選購品)

※可依訂單需求製作特殊測針。可對應規格等相關內容，請洽距離最近的本公司營業單位。